

California Rally Series
2026 Rule Book
(Links in [blue](#), changes for 2026 in [red](#))

Table of Contents:

[CRS Charter](#)

[CRS BOG](#)

[Event Requirements and Support](#)

[CRS Membership](#)

[CRS Rally Championship](#)

[CRS Rallycross Championship](#)

[Common Championship Information](#)

[Year End Awards](#)

Appendixes:

A) CRS-L2wd Class Rules

B) CRS Open Lite Class & CRS SxS Class Rules

C) CRS Open 4wd, CRS-5 & CRS-2 Class Rules

D) Previous Rally Champions

E) Previous Rallysprint Champions

F) Previous CRS Moto Champions

G) Previous Rallycross Champions

H) Special Award Winners

I) CRS Officers

J) BOG Structure and Operation Rules

CRS Charter

The California Rally Series (CRS) is an “association” as opposed to a “profit” based organization, formed by the event organizers and the officers of the series. The CRS has three major goals:

1. Support event organizers.
2. Provide championships that give meaningful year-end awards for local competitors.
3. Promote the sports of Stage Rallying and Rallycross.

The role of supporting event organizers includes loaning organizers funds to pay up front expenses, as well as providing clocks, sign boards, radios and other equipment for rally organizers to use.

The role of providing meaningful championships has focused on the CRS Rally and Rallycross Championships. In addition, this role has resulted in the formation of competitor-driven rally classes like CRS-L2wd.

The role of promoting the sport has resulted in the addition of “how to get involved” materials on the CRS website. CRS has also been active in recognizing volunteers, and in supporting rally schools.

CRS BOG

The CRS is governed by a Board of Governors (BOG) which consists of the organizer from each CRS event (Rallies, Rallysprints and Rallycrosses). Membership on the BOG will begin once the event has been accepted onto the CRS calendar and continue for the remainder of the year the event occurs in. In addition to the organizers there will be several other members including: the Director, Equipment Manager, Secretary/Treasurer, Marketing Officer, Competitor Liaison, Class Compliance Officer (CCO), Rallycross Liaison and Webmaster. The responsibilities of the officers are detailed in Appendix J of these rules.

BOG Operation:

The BOG shall make decisions on Calendar approval, amendments to these rules, amounts of fees, and any other items deemed appropriate by the Director. The BOG shall also be responsible for appointing people to fill the jobs of Equipment Manager, Secretary/Treasurer, Marketing Officer and Class Compliance Officer, Rallycross Liaison, Webmaster and Sponsor Liaison. The BOG will also serve as an informal forum for the organizers to discuss items related to the organization of rallies. For the details of BOG operation see Appendix J of these rules.

Event Requirements and Support

Rally Event Eligibility:

There will be certain minimum requirements which must be met if an event is to be considered for inclusion into the CRS Rally Championship. These requirements have been established to develop credibility in the eyes of the competitors, and thereby promote rallying in general (and the CRS specifically). An event will be considered a “new rally” if it has a new organizer and new stage roads or has not been run for two or more years. A “new rally” will only be allowed to count as either one coefficient 1 event or one coefficient 2 event in the CRS Rally Championship for that weekend. To be considered for inclusion in the championship as a coefficient 3 event or multiple events the rally must first have been previously executed successfully. Rally organizers will be limited to no more than three CRS rallies per weekend with a total of no more than six coefficients. Review of existing events is covered in Appendix J.

When establishing the rally calendar one objective will be to have at least three empty weekends between CRS Rally events. Having only two empty weekends between CRS Rally events will only be allowed with the approval of all the events involved. There will not be any additions to the CRS Rally calendar after Jan 1. Any changes to the schedule published in this book must be approved by the CRS BOG.

CRS Event Class Trophies / Awards:

CRS Rally events are encouraged to recognize the top CRS competitors (both driver and co-driver).

Organizer Support:

The CRS will loan any CRS organizer the funds required to pay the sanction and insurance fees. This loan is to be repaid to the treasurer prior to the event. The CRS maintains the following equipment and materials for use by event organizers free of charge: clocks (freezable Timewise clocks plus large start display clocks), rallycross timing system, family radios, sign boards, worker vests, clipboards, two EZ-Ups, and a portable public address system. Rally organizers will be allowed one pre-event mass emailing to current CRS members. The email can be sent by the Secretary. The CRS will rent equipment to non-CRS organizers for 10% of the replacement cost of the particular item. Any free use of CRS equipment at non-CRS events will need approval by the CRS BOG. Equipment that uses batteries will be supplied for rental with good batteries installed.

CRS Membership

Competitor Membership:

All competitors who wish to receive CRS championship points are required to be members, which costs **\$40** per calendar year. CRS membership includes CRS rulebook, two CRS decals, inclusion in the CRS championships (Rally, Rallysprint and Rallycross), and emails from the various events. The rest of the membership fee goes to year-end awards, and maintaining the supply of equipment used to support those who organize events. There will be a three month overlap allowed for people joining between Sep 27 and Dec. 31. For example, joining CRS on Sep 27, 2018 will buy a membership effective until Dec. 31, 2019 (1 year & 3 months); while joining on Sept. 26, 2018 will buy a membership effective until Dec. 31, 2018 (3 months). Competitors will begin accruing CRS championship points only after paying their annual membership fee. To be eligible to accrue points at a given event, you must have paid your membership fee prior to the start of competition.

Associate Membership:

The associate membership has been created for workers and other interested people who want to keep up on rally activities or support the CRS, but will not be competing. Associate members receive all of the benefits described above (decals and emails) but they are not eligible to compete in CRS events for championship points.. The fee for joining CRS as an associate member is only \$10 per calendar year. The three month overlap as described above applies for associate members as well. If an associate member should decide at a later date to become a competitor, he/she may change status by merely paying the \$20 difference.

How to Join:

To join as either a full or associate member go to the CRS website and fill out the online membership application. You can then pay either by PayPal or by check. If you have questions about membership you can contact the Competitor Liaison by email or phone.

CRS Rally Championship

Rally Championship Classes:

The five CRS classes will be recognized at all rally events (CRS Open 4wd, CRS-5, CRS-2, CRS Open Lite and CRS-L2wd). Issues related to vehicle eligibility for CRS Open 4wd, CRS Open Lite, CRS-5 and CRS-2 classes will be addressed via the sanctioning body process for the event in question. Some rally events may include two SxS (Side by Side) UTV classes (SxS Prod and SxS Prod Turbo). To be eligible for CRS points, SxS teams will need to have both a driver and a co-driver in the vehicle.

Coef. 1 Rally Co-Driver Requirements:

To avoid confusion relating to co-driver requirements, any Coef. 1 event advertised as a Rallysprint that is included in the Rally (not Rallysprint) Championship which will require co-drivers, must so state in the event announcement. If there is no such statement ("CO-DRIVERS REQUIRED"), co-drivers' points will not be awarded in the Rally Championship, regardless of what happens at the event.

Points, event weighting, dropping events and ties:

The Rally Championship will use the systems for awarding points, event weighting, dropping events and resolving ties described in "Common Championship Info".

CRS Rallycross Championship

Rallycross events are those events which do not have route instructions, do not require a co-driver, and do not require a roll cage. Any year that there are four or more rallycross events on the calendar at the beginning of the year, there will be a CRS Rallycross Championship for that year.

Rallycross Calendar:

The rallycross organizers will be limited to a maximum of three events per venue that will be included in the championship. The Rallycross Liaison will be the single point of contact for establishing and revising the championship calendar, which will be maintained on the CRS website.

An event may be added provided that 1) the organizer provides at least **six weeks'** lead time and 2) the organizer has previously completed a successful event at that venue. The event may be listed as non-points on the website in the case of insufficient lead time.

In the case of a date change, the organizer must provide notice at least three weeks in advance, or the event will lose its status as a championship event.

In the case of possible cancellation or postponement due to unforeseen circumstances such as poor course conditions, the organizer must give notice at least ten days before the event date. An advisory will then be posted on the CRS website. The organizer will follow with a final decision at least two days from the event. This will be posted on the CRS website. Subsequent rescheduling on the championship calendar will allow at least three weeks lead time.

Two CRS RX events on the same day or weekend, that are more than 300 driving miles apart, can both be on the CRS RX calendar, however competitors can only count CRS points from one or the other venue for that weekend. When that is the case the "number of events in the series", for determining the number of events to count, will be reduced by 1, to account for the fact that a given competitor could not run both events.

CRS RX events within 400 travel miles of a CRS Rally will not be allowed on the same weekend unless it is part of that CRS Rally weekend.

Rallycross Points:

The Rallycross Championship will use the systems for awarding points, counting events, and resolving ties described in “Common Championship Info” (page 24). There will be no organizer points awarded because it is possible for an organizer to compete in his/her own event if desired. To be eligible for a year-end award a competitor must have been a CRS member and started at least two events. If two or more CRS drivers compete in a given CRS Rallycross class, CRS year-end trophies will be awarded. For purposes of computing CRS Rallycross Championship points all runs will be counted. If a rallycross organizer should tabulate results differently the Rallycross points keeper will retabulate the results as necessary. The CRS Rallycross Championship will be limited to a maximum of three events per venue.

Rallycross Classes:

Rallycross Championship points will be awarded in **Stock Fwd, Stock Rwd**, Stock 4wd, **Prep Fwd, Prep Rwd**, Prep 4wd, **Mod Fwd, Mod Rwd**, Mod 4wd and SxS classes. Two-wheel drive cars are not eligible to run in any four-wheel drive class. There is no price limit for any of the Rallycross classes. For CRS Rallycross Championship points, competitors will only be allowed to accrue points in one class per event. Competitors running in two classes will accrue points for that event in the first class run (as opposed to being able to declare their choice).

Stock Fwd (SF), Stock Rwd (SR) & Stock 4wd (S4):

The CRS Stock Classes (Fwd, Rwd & 4wd) are the same as the SCCA Stock Classes. See section 6.2.C of the SCCA RallyCross rules for details. The Stock Classes allow competitors to use a cat back exhaust, and aftermarket air filter elements, brake pads, clutch disc, wheels (stock diameter and width), shocks, front sway bar, lights, roll cage, skid plate and latches. In addition any DOT tires are allowed as long as they don't say “For competition only” or “Not for street use”. Rally tires and studs are not allowed.

Prep Fwd, Prep Rwd, Prep 4wd, Mod Fwd, Mod Rwd & Mod 4wd:

These classes are based on the corresponding SCCA RX classes.

Side by Side (SxS):

The class will include all SxS classes for those Rallycross events that offer classes for SxS vehicles.

Common Championship Information

Claims: Any claims will be handled per the competition rules under which the event runs.

Event Points:

CRS points will be awarded to all CRS members, based solely on the event's published results. For championship purposes points will be awarded based on the CRS driver's or co-driver's finishing position in his/her class relative to other CRS competitors in the class. For instance, since non-CRS members will not receive points, the top finishing CRS member in a class will receive winning points regardless of any non-CRS competitors who finished ahead of him/her.

The organizers of the event will have 400 points to distribute amongst themselves, with no organizer getting more than 100 points (prior to weighting). No competitor can receive more than a total of 500 organizer's points in a given year. Organizer points will be assigned at the time the CRS standings are first tabulated for that event. Organizers can not get points as a competitor at their own event. Organizers that are not eligible for year end awards (because they have not yet competed in that class during that year), will be identified in the standings. Once the season is complete, any organizers who have not competed in the class they received organizer points in will be deleted from the final standings.

Place	Points	Place	Points	Place	Points
1 st	100	6 th	50	11 th	25
2 nd	88	7 th	43	12 th	23
3 rd	77	8 th	37	13 th	22
4 th	67	9 th	32	14 th and on	21
5 th	58	10 th	28	DNF	10

Event Weighting:

To properly reward the competitors who do well on the longer, more demanding events, these events will receive heavier weighting. For example, 1st in class in a coefficient 2 event awards 200 points, in a coefficient 3 event 300 points. For purposes of determining event weighting, "fast stage time" will refer to the expected total of all stage times for the fastest car. Events with 10 to 30 stage miles and less than 30 minutes of fast stage time will be coefficient 1 events. Events with 60 or more stage miles or 55 minutes of fast stage time will be coefficient 3 events. Those in between will be coefficient 2 events. For purposes of determining "stage miles" the distance from the Start control to the Stop control will be used. For longer events, the event organizer will be free to choose which portions of the overall event will be counted as separate CRS events.

Totaling Points:

Since it is desirable to allow competitors to drop their worst events, the following system for dropping events will be used. Rally Championship points will be finalized 30 days after the standings are published on the web site (contact the CRS Secretary for changes during this period).

total events in series	count best	total events in series	count best	Total events in series	count best
1	1	6, 7	4	12,13	7
2, 3	2	8, 9	5	14,15	8
4, 5	3	10,11	6	16, 17	9
				18, 19	10

Tie Breaking:

In the event of a tie at an event, all competitors tied for a position will be given the points for the tied position. The next placing competitor will be awarded points appropriate for the number of places below the tie. Example: A three-way tie for second will give all the tied teams 2nd place points (88), and the next placing team will get 5th place points (58).

In the event of a tie for a year-end ranking in any CRS championship the tie will be broken by comparing the total points accumulated at events where both competitors finished in the class in question. All events finished will be counted (no events will be dropped). For championships containing coefficient levels, this will be applied to the coefficient 3 events. If this does not resolve the tie, the same method will be applied to the coefficient 2 events. If a tie still exists, the same method will be applied to the coefficient 1 events. If the above method fails, the tie will remain.

Year End Awards

Class Awards:

There will be year-end awards (e.g., trophies) for the top competitors in each of the classes. Rallycross competitors must start a minimum of two events to be eligible for a year-end award. Competitors must finish at least one event to be eligible for a year end award. For all Championships, trophies will be awarded as follows:

Trophies	Competitors	Trophies	Competitors
5	15 or more	3	5 thru 9
4	10 thru 14	2	3 or 4
		1	1 or 2

Rookie of the Year:

To be a candidate a driver or co-driver must begin the year having never finished a Rally in that role. Rookie Drivers will be evaluated using a metric calculated by dividing the driver's points by the class champion's points. The Driver Rookie of the Year will be the qualifying driver who has the highest metric in his/her class. If a tie exists the driver in the class with the most drivers will be the Rookie of the Year. If a tie still exists the tie will remain. The Co-driver Rookie of the Year will go to the qualifying co-driver, accruing the most points (combining points from all classes). If there is a tie the award will go to the rookie co-driver with the most points in the most-subscribed class.

The Kenneth Zimmerman Memorial Award:

The Zimmerman Award was created to recognize those individuals who have made outstanding contributions to the sport of rallying in general and the CRS specifically. The recipient is determined by the director of the CRS. The award honors the sportsmanship and support of Dr. Kenneth Zimmerman.

Outstanding, Tenacious, Persevering Worker:

It is the unselfish contributions of workers at all events, whether communications, blockage, or control workers, that enable our series to succeed. The recipients of this award are selected by the CRS Board of Governors in recognition of their years of service to the sport of rallying.

Rallycross Supporter of the Year:

It is the unselfish contributions of organizers and helpers at events that enable our Rallycross Championship to succeed. The recipients of this award are selected by the CRS Board of Governors in recognition of their service to the sport.

Bill Moore Memorial Award:

The Bill Moore Award was created to honor a co-driver who, like Bill, has contributed to the sport of rallying in many areas, including as a worker, organizer, or BOG member.

Appendix A

CRS-L2wd Class Rules

For 2026 CRS-L2wd will use the 2026 ARA L2WD class rules.

In the future CRS-L2wd will be based on the current ARA L2WD rules with any exceptions or differences clearly defined in the CRS-L2wd rules.

Review of the relationship between the CRS-L2wd rules and the ARA L2WD rules will occur after the end of the competition year if a competitor in CRS-L2wd has sent a written request for such a review to the CRS Secretary. In that case the CRS Secretary will organize a meeting of the current CRS-L2wd competitors (probably via Zoom) to determine the path forward for the next competition year. That meeting will take place as soon as is feasible after the ARA L2WD rules have been updated for the coming season.

If during the competition year a CRS-L2wd competitor was removed from ARA L2WD (and therefore CRS-L2wd) as a result of the ARA class compliance process, then that competitor can petition the CRS Secretary to be included in CRS-L2wd. If that should happen the CRS Secretary will organize a meeting of the current CRS-L2wd competitors (probably via Zoom) to determine the path forward for that particular competitor. Options would include but are not limited to:

- Accepting the ARA determination.
- Rejecting the ARA determination for the vehicle in question for that event only.
- Rejecting the ARA determination for the vehicle in question for the remainder of the competition year.

Appendix B

Open 4WD, Open Lite, CRS-5 & CRS-2 Class Rules

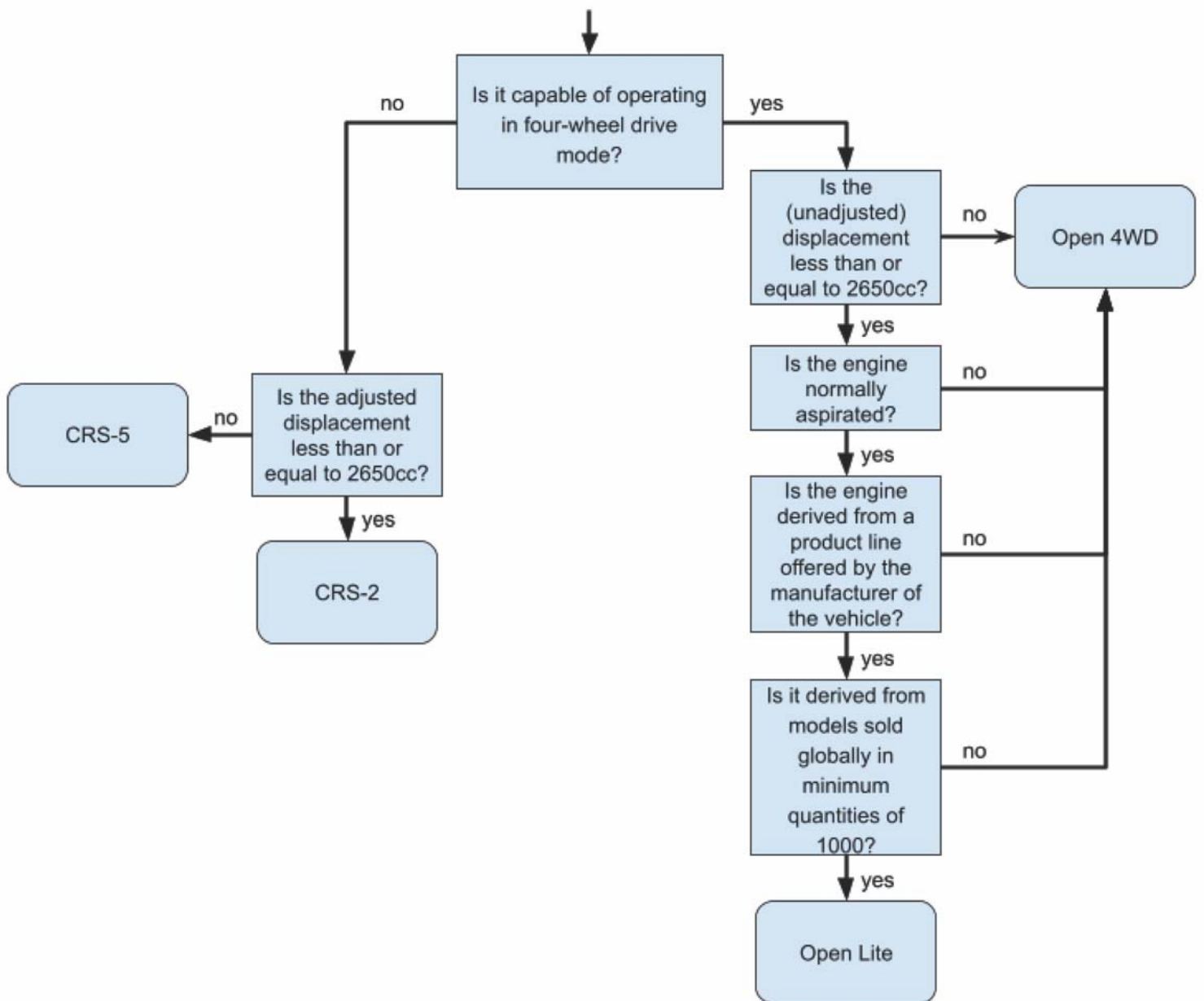
Open class cars are divided into four classes. Vehicles that are built to be capable of operating in four-wheel drive mode will be placed in Open Lite or Open 4WD class and cannot compete in CRS-2 or CRS-5. Two-wheel drive cars that were NOT designed to operate in four-wheel drive will be placed in either CRS-2 or CRS-5 and cannot compete in Open Lite or Open 4WD.

For four-wheel drive vehicles, Open Lite vehicles must be normally-aspirated, derived from models sold globally in minimum quantities of 1000, and have a maximum (unadjusted) displacement of 2650cc. The engine is unrestricted, but must be derived from a product line offered by the manufacturer of the vehicle. Four-wheel drive vehicles that do not meet these criteria will be placed in Open 4WD.

For two-wheel drive vehicles, those with an adjusted displacement less than or equal to 2650cc will be placed in CRS-2 while those above 2650cc will be placed in CRS-5.

The table of adjustment multipliers below will be used to determine a two-wheel drive vehicle's adjusted displacement. All factors that apply to a given vehicle will be used. For example, a front wheel drive car with a 2.0L, 4-valve engine with variable cam timing would have a total multiplier of 1.32 (based on $1.2 * 1.1$), producing an adjusted displacement of 2640cc.

Characteristic	Multiplier	Characteristic	Multiplier
Rotary engines	1.8	Variable cam timing	1.1
Forced induction	1.6	Rear wheel drive	0.9
4 valves per cylinder	1.2	Diesel engines	0.8
3 valves per cylinder	1.1	Pushrod engines	0.8



Appendix C

CRS SxS Class Rules

CRS SxS (Side by Side) will recognize 2 classes for the CRS Championship. Normally aspirated production SxS vehicles will run in the SxS Production Class (SxS P). Turbocharged Production SxS vehicles will run in the SxS Production Turbo Class (SxS PT). Any CRS Rally that includes CRS SxS classes is eligible for inclusion in the CRS SxS Championship. Any year that there are 3 or more CRS SxS events on the calendar at the beginning of the year, there will be a CRS SxS Championship. Competitors must be CRS members prior to the event to accrue CRS SxS Championship points. The CRS SxS Championship will use the systems for awarding points, weighting, dropping events and resolving ties described in Common Championship Info.

Appendix D

Previous Rally Champions

OPEN CLASS

Year	Drivers	Co-Drivers
1975	Hendrik Blok	Steve Ruiz
1976	Hendrik Blok	Erick Hauge
1977	Hendrik Blok	Erick Hauge
1978	Hendrik Blok	Rod Sorenson
1979	Rod Millen	Mark Howard
1980	Rod Millen	Grant Whittaker
1981	Frank Jacob	Wes Gaede
1982	Ken Smith	Dennis Sheean
1983	Richey Watanabe	Randy Hensley
1984	Richey Watanabe	Howard Watanabe
1985	Scott Child	Jim Love
1986	Lon Peterson	Jim Love
1987	Bill Holmes	Jim Rogers
1988	Lon Peterson	Jim Love
1989	Lon Peterson and Jeff Griffin (Tie)	Camille Griffin
1990	Lon Peterson	Jim Love
1991	Lon Peterson	Jim Love
1992	Jeff Griffin	Chris Griffin
2014	John Trucks	Christopher Fine
2015	Ryan Millen	Christina Fate

STOCK GT CLASS

Year	Drivers	Co-Drivers
1988	Mike Blore	Gary Dunklau
1989	Ken Smith	Mark Williams
1990	Gary Luke	Mark Williams
1991	Tony Tavares	Carlos Tavares
1992	Roger Hull	Rob Cherry

STOCK CLASS

Year	Drivers	Co-Drivers
1978	Mike Gibeault	Tim Cox
1979	Mike Gibeault	Gale Tyler
1980	Kris Mellon	Damon Trimble
1981	Mike Gibeault	Lynnette Allison
1982	Tom Sullivan	Jay Mathes
1983	Mike Whitman	Rob Cherry
1984	Mike Whitman	Rob Cherry
1985	Mike Whitman	Lynnette Allison
1986	Ray Hocker	Bill Moore
1987	Topi Hynynen	Ray Thurm
1988	Roger Hull	Jim Jacobson
1989	Eric Wilson	Jim Jacobson
1990	Anton Musev	Lisa Scheer
1991	Jeff Hendricks	Ev Hendricks
1992	Jeff Hendricks	Larry Scott
1993	Tony Shumaker	Larry Scott
1994	Steve Scott	Bob Scott
1995	Mike Marcy	Steve Scott
1996	Terry Stonecipher	Michelle Gibeault
1997	Dennis Chizma	Claire Marie
1998	Steve Bender	Craig McHugh
1999	Nick Taylor	Pete Morris
2000	Nick Taylor	Josh Armbruster

Appendix D

Previous Rally Champions (cont'd)

Open 2wd

Year	Drivers	Co-Drivers
1993	Ron Wood	Kelly Walsh
1994	Lon Peterson	Bill Gutzmann
1995	Bill Malik	Roine Anderson
1996	Bill Malik	Farina O'Sullivan
1997	Bill Malik	Farina O'Sullivan
1998	Carl Jardevall	Ole Holter
1999	Frank Paredes	William Staley
2000	Jim Gillaspay	Mick Kilpatrick
2001	Richard Byford	Paul Timmerman
2002	Bill Malik	Ryan Cavalier
2003	Dave Coleman	Amar Sehmi
2004	Jim Pierce	Adrian Lengsfeld
2005	Cable Rhodes	Jennifer Imai

CRS GT Class

Year	Drivers	Co-Drivers
2001	Bruce Brown	Bob Moe
2002	Bruce Brown	Pat Brown
2003	Dan Brink	Tina Lininger
2004	Bruce Brown	Pat Brown
2005	Chris Wilson	Eric Olson
2006	Marvin Ronquillo	John Burke
2007	Scott Clark	Marie Boyd
2008	Kevin Welker	Nolan Sambrano
2009	Kevin Welker	Nolan Sambrano
2010	Kevin Welker	Nolan Sambrano
2011	Alex Rademacher	Jeana Yi
2012	Alex Rademacher	Jeana Yi

Appendix D

Previous Rally Champions (cont'd)

Open 4wd Class

Year	Drivers	Co-Drivers
1993	Mitch McCullough	Scott Webb
1994	Rui Brasil	Scott Webb
1995	Chris Weleff	Brian Paul
1996	Dennis Chizma	Carlos Tavares
1997	Vartan Samuelian	Ara Manoukian
1998	Rui Brasil	Carlos Tavares
1999	Lauchlin O'Sullivan	Farina O'Sullivan
2000	Tony Chavez	Eddie Cardenas
2001	Lauchlin O'Sullivan	Alex Gelsomino
2002	Leon Styles	John Dillon
2003	Piers O'Hanlon	Julie Lin
2004	Vartan Samuelian	Alex Gelsomino
2005	Blake Yoon	Alan Perry
2006	Wolfgang Hoeck	Piers O'Hanlon
2007	Leon Styles	Matt Gauger
2008	Brian Scott	John Dillon
2009	Keith Jackson	Marra Estep
2010	Keith Jackson	Marra Estep
2011	Jon Burke	Laurence Babahekian
2012	Keith Jackson	Marra Estep
2013	Tingwu Song	Martin Brady
2016	John Coyne	Doug Nagy
2017	Flynn Baglin	Doug Nagy
2018	Flynn Baglin	Sean McElwain
2019	Flynn Baglin	Alix Hakala
2020-21	Flynn Baglin & Kenny Niernberg (tie)	Zach Pfeil
2022	Arto Ylikangas	Mary Ylikangas
2023	Arto Ylikangas	Mary Ylikangas
2024	Arto Ylikangas	Mary Ylikangas
2025	Arto Ylikangas	Mary Ylikangas

Appendix D

Previous Rally Champions (cont'd)

CRS Open Lite

Year	Drivers	Co-Drivers
2013	Ray Piloto	Tyler Deal
2014	Evan Davis	Nicholas Roder
2015	Stephen Benson	Nicolas Renold
2016	Michael Seidman	Thomas Luhrs
2017	Kurt Northrop	Will Smith
2018	Kurt Northrop	Will Smith
2019	Dave Brown	Mike Brown
2020-21	Dave Brown & Taig Miller (tie)	Mike Brown
2022	David Peretz	Aron Cohen
2023	Jacob Despain	Ryan Bohannon
2024	Albert Goad	Loren Bench
2025	Eliza Coleman	N/A

CRS - 5

Year	Drivers	Co-Drivers
2006	Jeff Rados	Guido Hamacher
2007	Bill Holmes	Kevin Carter
2008	Chuck Wilson	Aaron Laeng
2009	Bill Holmes	Sean Gallagher
2010	George Doganis	Thomas Smith
2011	Brian Hamblin	Ray Hocker
2012	Bill Holmes	Sean Gallagher
2013	Jeff Rados	Guido Hamacher
2016	Andrew Cowan	Ryan Dunham
2017	Andrew Cowan	Omar Cardenas
2018	Fred Hatch	Charles Grabow
2019	Andrew Cowan	Ralph Pond & Charles Grabow (tie)
2020-21	Peter Guagenti	Brandon Panek
2022	Peter Guagenti	Dylan Hooker
2023	Tim Wickberg	Matthew Trott
2024	Flynn Baglin	N/A
2025	James Veatch	Jenna Cooper

Appendix D

Previous Rally Champions (cont'd)

CRS - 2

Year	Drivers	Co-Drivers
2006	Larry Gross	Doug Young
2007	Bill Malik	Christopher Edstrom
2008	George Doganis	Thomas Smith
2009	Chris Palermo	Brent Ellzey
2010	Terrance Peterson	Nic Peterson
2011	Michel Hoche-Mong	Brent Ellzey
2012	Michel Hoche-Mong	Brent Ellzey
2013	Kristopher Marciniak	Christine Marciniak
2014	Markus Saarinen	Alicia Saarinen
2015	Markus Saarinen	Alicia Saarinen
2016	Javier Olivares	Christine Marciniak
2017	Erik Christiansen	Amy Floyd
2018	Bret Robinson	Amanda Folland
2019	Erik Christiansen	Amy Floyd
2020-21	Tim Wickberg	Matthew Trott
2022	Tim Wickberg	Matthew Trott
2023	Erik Christiansen	Amy Floyd
2024	Tony Chavez	Sterling Smith
2025	Benji Carvallo	Gerardo Carvallo

SxS Production Turbo

Year	Drivers	Co-Drivers
2017	Brent Lee	John Dillon
2019	Stephan Verdier	Erica Sacks
2020-21	Travis Fienhage	

SxS Production

Year	Drivers	Co-Drivers
2017	James Hill	Erica Sacks
2019	Chris Cash	Steven Winnat

Appendix D

Previous Rally Champions (cont'd)

Performance Stock Class

Year	Drivers	Co-Drivers
1994	Jeff Hendricks	Noble Jones
1995	Dennis Chizma	John Moore
1996	Robert Tallini	Steve Scott
1997	Terry Stonecipher	Chrissy Beavis
1998	Doug Robinson	Shane Polhamus
1999	Mark Brown	Craig McHugh
2000	Brad Boli	Gary Garman
2001	Tony Chavez	Doug Robinson
2002	Terry Stonecipher	Jeff Bruett
2003	Ian Hudson	Brian Hudson
2004	Mike Masano	Linda Masano
2005	Michael Taylor	Steven Taylor
2006	George Doganis	Tom Smith
2007	George Doganis	Tom Smith
2008	Kristopher Marciniak	Christine Marciniak
2009	John Black	John Stewart
2010	Alex Rademacher	John Stewart
2011	Jennifer Imai	Terry Stonecipher
2012	Sarkis Mazmanian	Lori Stone
2013	Sarkis Mazmanian	Michael Mazmanian
2014	Tony Chavez	Raquel Salas
2015	Elina Lipilina	Sean McElwain
2016	Brian Tullio	Andres Bautista
2017	Tony Chavez	Raquel Salas
2018	Travis Fienhage	Raquel Salas
2019	Jennifer Stonecipher	Terry Stonecipher
2020-21	Alex Ramos	Andres Bautista
2022	Jonathan Compton	Brie Moore
2023	Jennifer Stonecipher	Terry Stonecipher
2024	Jennifer Stonecipher	Terry Stonecipher

Appendix E

Previous Rally Sprint Champions

Open 4wd

2003 Leon Styles
2004 Steve Winter

Performance Stock

2003 Jun Andrada
2004 Marco Pasten

Open 2wd

2003 Tony DelaCuesta
2004 Scott Harvey

CRS GT Class

2003 Robert Brinkhurst
2004 Robert Brinkhurst

Appendix F

Previous CRS Moto Champions

Under 800 cc

2009 Andrew Sutherland
2010 Chris Martin
2011 John Black

Over 800 cc

2009 Tim Hillsamer
2010 Ken Wahlster

Appendix G

Previous Rallycross Champions

Open 4wd

1999 Doug Robinson
2000 Leon Styles

Performance Stock

1999 Dan Edmunds
2000 Doug Whited
2001 Steve Jasik
2002 Gabe Pari

Group 2 / 5

1999 Dennis Chizma
2000 William Prince

CRS GT Class

2001 Bruce Brown
2002 George Scott

Stock Class

1999 Bill Feyling

Street Stock 4wd

2001 Robert Brinkhurst
2002 Robert Brinkhurst
2003 David Wilhelmy
2004 Mark Anton
2005 Harry Allen
2006 Matthew Meyer
2007 Nathan Hall
2008 Dave Haws

Street Stock 2wd

2000 Ian Hudson
2001 Eric Anderson (O2)
Gabe Pari (U2)
2002 Chris Wilson
2003 Kengo Takahashi
2004 Eli Gilbert
2005 Eli Gilbert
2006 Terry Miller

Appendix G

Previous Rallycross Champions (con't)

Street Stock 4wd (con't)

2009	Bill Martin (South)
	John Stewart (North)
2010	Brian Dreger (tie)
	John Black (tie)
2011	Leelyn Pritchard (South)
2012	Chris Walker

Street Stock 2wd (con't)

2007	Eli Gilbert
2008	John Black
2009	David Clark (South)
	David Clark (North)
2010	Eric Martin
2011	Brent Hercelinsky (South)
2012	Danny Downey

Street Modified 4wd

2003	Martti Silvola
2004	Michel Hoche-Mong
2005	J Farina
2006	Isamu Kakitani
2007	Phil Stewart-Jones
2008	Louie Minette
2009	Dave Haws (South)
	Dave Haws (North)
2010	Bill Martin
2011	Jon Rea (South)
	Alex Miro (North)
2012	Thomas Bloess

Street Modified 2wd

2003	Jim Wright
2004	D'John Keith
2005	John Black
2006	John Black
2007	Robert Miller
2008	Robert Miller
2009	Steve Lechuga (South)
	Burney Storms (North)
2010	Steve Lechuga
2012	Randy Gallman

Rally 4wd

2004	Jack Maranto
2005	Jack Maranto
2006	Jack Maranto
2007	Keith Jackson
2008	Walter Park
2009	Kevin Mount (South)
	Tucker Heiner (North)
2010	Andrew Holman
2011	John Chabot (South)
	Alex Rademacher (North)
2012	Aaron Ekinaka
2013	Evan Davis
2014	Brent Smith
2015	Kurt Smith
2016	Kurt Smith

Rally 2wd

2004	Jacques Levy
2005	Mark Anton
2006	Mark Anton
2007	Mark Anton
2008	Jack Szanto
2009	John Black (South)
	Alex Rademacher (North)
2010	Dave Peters
2011	Kris Marciniak (South)
	Omar Cardenas (North)
2012	Eric Martin
2013	Eric Martin
2014	Eric Martin
2015	Brent Blakely
2016	Brent Blakely

Appendix G

Previous Rallycross Champions (con't)

Mod 4wd

2017	Brent Blakely
2018	Daryl Fike
2019	Bob Maselli
2020-21	Brent Blakely
2022	Brent Blakely
2023	Brent Blakely
2024	Brent Blakely
2025	Brent Blakely

Mod 2wd

2017	Eric Martin
2018	D'John Keith
2019	D'John Keith
2020-21	Grover Davis
2022	Grover Davis
2023	Grover Davis
2024	Grover Davis
2025	Grover Davis

Prep 4wd

2017	Donnie Smith
2018	Richard Schreiber
2019	James Veatch III
2020-21	Justin Sudberry
2022	Nicholas Ormiston
2023	Roger Dumas
2024	Cory Siler
2025	Eric Sinclair

Prep 2wd

2017	Sarkis Mazmanian
2018	Omar Cardenas
2019	Alex Ramos
2020-21	Nigel Mott
2022	John Black
2023	John Black
2024	Nick Londy
2025	Rob Krider

Stock 4wd

2013	Brent Smith
2014	Jonathan Wardlaw
2015	Lon Peterson
2016	Ryan Bakeman
2017	James Veatch III
2018	James Veatch III
2019	Anthony Orantes
2020-21	Anthony Orantes
2022	Dan Rehart
2023	Eric Sinclair
2024	Casey Weeks
2025	D'John Keith

Stock 2wd

2013	Bill Martin
2014	John Black
2015	Danny Downey
2016	Sanjay Singh
2017	Danny Downey
2018	Chris McMillan
2019	Danny Downey
2020-21	Dwight Wood
2022	Dwight Wood
2023	Mark Allen
2024	Wallace Wood
2025	Danny Downey

SxS

2025	Kevin Jones
------	-------------

Appendix H

Special Award Winners

Rookies of the Year

Year	Drivers	Co-Drivers
1992	Rhys Millen	Trisha Devreugd
1993	Mitch McCullough	Scott Webb
1994	Cable Rhodes	Michael Taylor
1995	Bob Pendergrass	Jon Weigley
1996	Terry Stonecipher	Michelle Gibeault
1997	Doug Robinson	Sue Robinson
1998	Steve Bender	Craig McHugh
1999	Nick Taylor	Josh Armbruster
2000	Sean Otto	Jason Lane
2001	Stephan Verdier	Alan Walker
2002	Dan Brink	
2003	Piers O'Hanlon	Neil Smith
2004	Jon Rood	Piers O'Hanlon
2005	Blake Yoon	Vartan Davtyan
2006	Jennifer Imai	
2007	John Rea	
2008	Shawn Hudspeth & John Black	Jennifer Hudspeth & Brent Ellzey
2009	Chris Palermo	Kimberley Palermo & Richard Burden
2010	Gaylord Van Brocklin	Steve Secviar
2011	Kris-Jon Lyssand	Jeana Yi
2012	Ray Piloto	Victoria Rosner
2013	Jason Lightner	Leelyn Pritchard
2014	Evan Davis	Vahan Yessayan
2015	Ryan Millen	Nicolas Renold
2016	Brian Tullio	Brent Blakely
2017	Michael Cadwell	Omar Cardenas
2018	Travis Fienhagel	Nathan Lumley
2019	Kyle McLennan	Tom Giese
2020-21	Tim Wickberg	Matthew Trott
2022	Arto Ylikangas	Mary Ylikangas
2023	Trenton Koury	Ryan Bohannon
2024	Grant Steen	Sterling Smith
2025	James Veatch III	Jenna Cooper

Appendix H

Special Award Winners (con't)

Kenneth Zimmerman Memorial Award

1982	Tim Fountaine & Frank Jacob	2003	John Dillon
1983	Ken Adams	2004	Pat & Denise McMahon
1984	Roger Allison	2005	Michael Taylor
1985	Mike Gibeault	2006	Donna Hocker
1986	Clint Heuring	2007	Tony Chavez
1987	Lynnette Allison	2008	Michel Hoche-Mong
1989	Nancy Peterson & Sheryl Love	2009	Dave Belcher
1990	Michael O'Sullivan	2010	Christine Marciniak
1991	John Elkin	2011	Chuck Wilson
1992	Sam Moore	2012	Eddie Fiorelli
1993	Bill & Kay Gutzmann	2013	Brent Ellzey
1994	Randy Hensley	2014	Brian & Stacey Hamblin
1995	Ron Wood	2015	Tom Laeng
1996	Lon Peterson	2016	Chris & Mitch Spacone
1997	Paula Gibeault	2017	Sanjay Singh
1998	Matt Sweeney & Lucinda Strub	2018	Kris Marciniak
1999	Ray Hocker	2019	Erik Christiansen & Amy Floyd
2000	Harris Done	2020-21	Chris Spacone
2001	Mike Gibeault	2022	Ryan Bakeman
2002	Doug & Sue Robinson	2023	Riley Trout
		2024	Arto Ylikangas
		2025	James Veatch III

Appendix H

Special Award Winners (con't)

Bill Moore Memorial Award

1993	John Elkin	2006	Michel Hoche-Mong
1994	Bill Gutzmann	2007	Paula Gibeault
1995	Terry Stonecipher	2008	Jens Schkade
1996	Robert Tallini	2009	Christine Marciniak
1997	Donna Mitchell	2012	Jim Robison
1999	Sue Robinson	2013	Brent Ellzey
2000	John Dillon	2014	Lynnette Allison
2001	Doug Robinson	2015	Jon Rood
2002	Bill Barfoot	2018	Amy Floyd
2003	Gabe Pari	2019	Jennifer Stonecipher
2004	Michael Taylor	2024	James (Jimmy) Veatch III
2005	Tony Chavez	2025	Riley Trout

Galal Souki Memorial Award

1990	Sam Moore	2004	Brian Hudson
1991	Tony Shumaker	2005	Mike Moyer
1992	Tony Chavez	2006	Shea Burns
1993	Dennis Chizma	2007	George Doganis
1994	Jeff Hendricks	2008	Kevin Welker
1995	Dave Turner	2009	Alex Rademacher
1996	Terry Stonecipher	2010	Katianna Pihakari
1997	Adrienne Scott	2011	John Black
1998	Doug Robinson	2012	Jen Imai
1999	Paula Gibeault	2013	Sarkis Mazmanian
2000	Brad Boli	2014	Raquel Salas
2001	Doug Whited	2018	John Dillon
2002	Mike & Linda Masano	2019	Andres Bautista
2003	Michael Taylor	2020-21	Alex Ramos

Appendix H

Special Award Winners (con't)

Outstanding, Tenacious and Persevering Worker of the Year

1993	Ron Melitsoff		Vivian Millar
1994	Nancy Peterson	2009	Don Shreyer
	and Judy Teeter	2010	Sean Torres and
1995	Bob Ward		Wesley Skelton
1996	Michael O'Sullivan	2011	Dan Brink
1997	Matt Sweeney, Lucinda Strub	2012	Chris Spacone
	and Art Jury	2013	Jon Rood
1998	Wayne Almquist	2014	Mike & Paula Gibeault
1999	Scott & Toni Dicks	2015	Lee Sorenson and
2000	Jay Deacon		Randy Graves
2001	Dean Chambers and	2016	Jeff Hendricks
	Alvin Brown	2017	Frank Goode
2002	Pat & Denise McMahon	2018	Marti Silvola
2003	Dave Belcher	2019	Ryan Bakeman
2004	Carl Schmid	2020-21	Brian Hamblin
2005	Carolyn Reed	2022	Lyle Gee
2006	Peter & Marion Millar	2023	Kevin Mount
	and Brent Ellzey	2024	Donna Benson
2007	Michel Hoche-Mong	2025	Ron Jarvis
2008	Tom Hobbs and		

Appendix H

Special Award Winners (con't)

Rallycross Supporter of the Year

2007	Lucy Ryan	2017	Donnie Smith & Kurt Northrop
2008	Dustin Wall	2018	Lisa Strom
2009	Krystle Minette	2019	James Veatch III & Bob Maselli
2010	Chris Walker	2020-21	Nigel Mott
2011	Thomas Bloess	2022	Nicholas Ormiston
2012	Doug Whited	2023	Theresa (Terry) Mora
2013	Jayson Woodruff	2024	Devon Winrick & Jenna Cooper
2014	Bill Martin and Eric Martin	2025	Kevin Jones
2015	Lon Peterson		
2016	Mathew Mendoza		

Appendix I 2026 CRS Officers

Director	Ryan Bakeman <Director@CaliforniaRallySeries.com>
Secretary / Treasurer	Mike Gibeault <Secretary@CaliforniaRallySeries.com>
Webmaster	John Dillon <Webmaster@CaliforniaRallySeries.com>
Marketing Officer	TBD <Marketing@CaliforniaRallySeries.com>
Competitor Liaison	Amy Floyd <Competitors@CaliforniaRallySeries.com>
Equipment Manager	Paula Gibeault <Equipment@CaliforniaRallySeries.com>
Rallycross Liaison	Sanjay Singh <RallyCross@CaliforniaRallySeries.com>

Appendix J

BOG Structure and Operation Rules

The CRS is governed by a Board of Governors (BOG) which consists of the organizer from each CRS event (Rallies, Rallysprints and Rallycrosses).

Membership on the BOG will begin once the event has been accepted onto the CRS calendar and continue for the remainder of the year the event occurs in.

In addition to the organizers there will be a number of other members including: the Director, Equipment Manager, Secretary/Treasurer, Marketing Officer, Web Master and Class Compliance Officer. The responsibilities of the officers are detailed as follows:

Director:

The Director will be elected by a vote of the CRS membership and shall be in charge of the general operations of the CRS. The Director will conduct BOG meetings, and act as the official contact person for the CRS. The Director will be responsible for the acquisition of all the year-end awards (within the budget). The Director will be responsible for the year-end awards banquet, and any other social events as desired. The Director has the power to expend funds as required to accomplish these tasks and other CRS related business as deemed appropriate. The Director may delegate any of these responsibilities to other individuals if desired.

Equipment Manager:

The Equipment Manager will be responsible for the CRS rally equipment (green flags, clocks, radios, bibs, sign boards, PA system etc). The manager will order new sign boards and other equipment as necessary to support the various CRS events. The manager will furnish the desired equipment to the organizers prior to the event and collect it from the organizer after the event.

Secretary/Treasurer:

The Secretary will be responsible for recording the minutes of the BOG meetings, tabulating votes and updating the rule book as required. The Secretary will be responsible for tabulating the CRS Rally and Rallycross standings. The Secretary will also be responsible for generating emails to all CRS members as needed. The Treasurer will be responsible for dispensing funds to pay for equipment, decals, trophies, etc. The treasurer will also maintain a budget which will be presented to the BOG as needed.

Competitor Liaison:

The Competitor Liaison will act as a point of contact for competitors who would like to make an input to the BOG. He/she will keep written records of the competitor comments and inputs from competitors. The Competitor Liaison will attend BOG meetings. To be eligible for this position the person must have been a competitor on at least one CRS event a year for the three previous years, and plan on continued CRS involvement.

Rallycross Liaison:

The Rallycross Liaison will be the competitor contact for those seeking information on the CRS Rallycross Championship. The Rallycross Liaison will be responsible for:

- Making calendar decisions throughout the year and informing the BOG & webmaster of changes.
- Obtaining digital photos for year end awards.

Webmaster:

The Webmaster will maintain the CRS website, keeping it current with news, series standings, photos etc.

Marketing Officer:

The Marketing Officer will actively seek to promote CRS via social media as well as providing materials to event organizers to facilitate promoting CRS membership.

BOG Operation:

The BOG shall make decisions on Calendar approval, amendments to these rules, amounts of fees, and any other items deemed appropriate by the Director. The BOG shall also be responsible for appointing people to fill the jobs of Equipment Manager, Secretary, Marketing Officer, Treasurer, Rallycross Liaison and Webmaster. The BOG email Group will also serve as an informal forum for the organizers to discuss items related to the organization of rallies. For voting purposes each Rally event shall have the same number of votes as the event's weighting factor (1, 2 or 3), with a limit of 3 BOG votes per competitive weekend. Rallysprint organizers will have one vote for each event organized. Rallycross organizers will have one vote for each CRS points event organized. Any officers that are not organizers will have one BOG vote. Each event will have a single point of contact for the purposes of BOG email polls.

The single point of contact for each event will designate who from his event shall be on the BOG mailing list and who will have voting privileges at meetings. If an event is dropped from the calendar, for whatever reason, that event's organizer will lose his BOG Voting privileges for that event at that point. A quorum of at least 50% of the possible votes must be present to make any decisions on rules.

BOG Email Voting

In order to complete an email BOG vote, either a majority of the possible votes must be cast or a minimum of 3 working days (not Sat, Sun or holidays) must have expired.

BOG Meeting Agenda

The preliminary Agenda for the year end BOG meeting shall be distributed to the BOG members at least 4 weeks prior to the meeting.

BOG Meeting Proxies

To establish a proxy for the yearly BOG meeting, the organizer or officer will be required to notify either the director or the secretary prior to the meeting. Any one individual will be limited to holding only one other BOG member's proxy.

Championship Related BOG voting

While all BOG members are welcome to participate in the discussion of any issue, for voting purposes the BOG will partition issues into four categories: "Rally Only", "Rallycross Only" and "Common". The Rally Only and Rallycross Only categories will be for those issues that only relate to that specific championship (e.g., CRS-2 rules would only relate to Rally). Issues that have crossover interest (such as budget and membership items) will be handled as "Common". The table below details which members of the BOG will vote on which issues.

BOG Position	Rally Only	Rallycross Only	Common
Director, Webmaster, Secretary/Treasurer	X	X	X
Competitor Liaison, Marketing Officer	X	X	X
Equipment Manager, Rally Organizers	X		X
Rallycross Liaison, Rallycross Organizers		X	X

Rally Event Review

The CRS BOG shall review an existing CRS Rally event for inclusion in the championship if:

- There is a new organizer or
- There are all new stage roads or
- Both the published stage mileage and the winning time are less than their respective thresholds..

Downgrading Event Weighting

If an event, for whatever reason, is unable to execute the level of event that was initially planned, the organizer can request the BOG to downgrade the weighting as long as there is at least 6 weeks before the event.

Expenditure of Funds

Expenditures of less than \$100 can be approved by either the Director or the Treasurer. Expenditures of more than \$100 need the approval of the Common BOG.